



Anthony Webb

Pellipar Close, Palmers Green, London, N13
Offers In Excess Of £350,000 Leasehold

Anthony Webb
ESTATE AGENTS

Pellipar Close, Palmers Green, London, N13

Amazing opportunity! Recently reduced, this turnkey home is ideal for first-time buyers, investors or those seeking a cozy downsizing option.

Boasting easy ground floor access, this impeccably presented apartment features two double bedrooms. It is situated in a privately built development with self-management, just off Fox Lane. Enjoy the convenience of being a short walk away from Green Lanes' shops, restaurants, bus routes, and Palmers Green mainline station connecting to Moorgate.

Key features include a secure communal entrance with an entry phone system, a hallway with laminate flooring, a spacious living room with a large window and laminate floor, a modern kitchen with a storage cupboard and laminate floor, a contemporary shower room with tiled flooring, double glazing, gas central heating, and a gated underground parking space.

Enfield Council Tax Band E
Remaining lease 133 years
Ground rent £0
Service charges £1000 p.a (£250 per quarter)

- Two double bedrooms
- Ground floor flat
- Spacious living room
- Modern kitchen/shower room
- Long lease
- Under ground parking space
- Double glazing/gas central heating
- Close to shops/buses/station





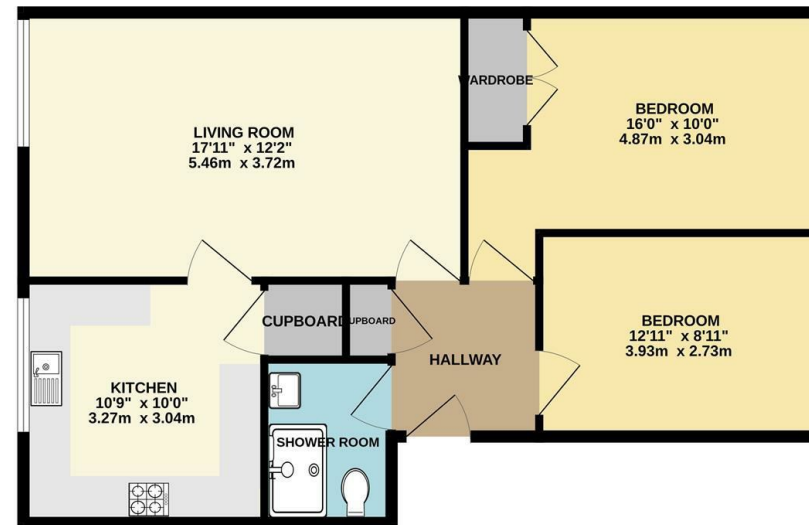
Pellipar Close Palmers Green London N13 4AG

Tenure: Leasehold
Gross Internal Area: 700.00 sq ft



Energy Efficiency Rating		Current	Potential
Very energy efficient - lower running costs			
(92 plus) A			
(81-91) B			
(69-80) C		75	81
(55-68) D			
(39-54) E			
(21-38) F			
(1-20) G			
Not energy efficient - higher running costs			
England & Wales		EU Directive 2002/91/EC	
Environmental Impact (CO ₂) Rating		Current	Potential
Very environmentally friendly - lower CO ₂ emissions			
(92 plus) A			
(81-91) B			
(69-80) C			
(55-68) D			
(39-54) E			
(21-38) F		77	85
(1-20) G			
Not environmentally friendly - higher CO ₂ emissions			
England & Wales		EU Directive 2002/91/EC	

GROUND FLOOR



TOTAL FLOOR AREA: 700sq ft (65.0 sq.m.) approx.
Whilst every attempt has been made to ensure the accuracy of the floorplan contained here, measurements of doors, windows, rooms and any other items are approximate and no responsibility is taken for any error, omission or mis-statement. This plan is for illustrative purposes only and should be used as such by any prospective purchaser. The services, systems and appliances shown have not been tested and no guarantee as to their operability or efficiency can be given.
Made with Metropix ©2023

Property particulars as supplied by Anthony Webb Estate Agents are set out as a general outline in accordance with the Property Misdescriptions Act (1991) only for the guidance of intending purchasers of lessees, and do not constitute any part of an offer or contract. Details are given without any responsibility, and any intending purchasers, lessees or third parties should not rely on them as inspection or otherwise as to the correctness of each of them. We have not carried out a structural survey and the services, appliances and specific fittings have not been tested. All photographs, measurements, floor plans and distances referred to are given as a guide only and should not be relied upon for the purchase of carpets or any other fixtures statements or representations of fact, but must satisfy themselves by or of fittings, gardens, roof terraces, balconies and communal gardens as well as tenure and lease details cannot have their accuracy guaranteed for intending purchasers. Lease details, service ground rent (where applicable) are given as a guide only and should be checked and confirmed by your solicitor prior to exchange of contracts. no person in the employment of Anthony Webb has any authority to make any representation or warranty whatever in relation to this property.

348 Green Lanes, Palmers Green, London N13 5TJ
020 8882 7888
palmersgreen@anthonywebb.co.uk
anthonywebb.co.uk

Anthony Webb
ESTATE AGENTS